

## CRANES OPERATING IN ROENNE HARBOUR (NEAR EKRN AERODROME)

**Ref.** AIP Denmark, AIRAC SUP 35/24.

*Note: This SUP replaces RDAF FLIP SUP 02/24.*

### 1 Introduction

From November 28 2024 to March 31 2026, several land based cranes extending up to 348 FT MSL will be working in Rønne Harbour on a temporary basis. Some of these cranes penetrate the Conical surface, but do not affect the instrument flight procedures at Bornholm/Rønne Airport.

During the same period, two ship based-cranes, Rønne Havn 1, 525 FT MSL and Rønne Havn 2, 689 FT MSL may operate in Rønne Harbour on a temporary basis. The presence of these cranes will impact the instrument flight procedures at Bornholm/Rønne Airport.

To address this, three separate sets of instrument flight procedures have been established and these procedures will include additional instructions, guidelines, limitations, or restrictions to ensure the safe navigation of aircraft in the vicinity of the cranes.

### 2 Operational Implications

#### 2.1 Temporary obstacles.

Obstacles penetrating obstacle limiting surfaces						
OBST ID / Designation	OBST type	OBST position	ELEV (FT)	HGT AGL (FT)	Markings / Type, Colour	
Rønne Havn 1	Crane	55 05 14.88N 014 41 29.30E	525	515	LIM FLG W	
Rønne Havn 2	Crane	55 05 26.83N 014 41 21.16E	689	679	LIH FLG W	
Rønne Havn 3	Wind turbine parts (24)	55 05 24.04N 014 41 35.20E	273	263	LIM FR	
Rønne Havn 4	Cranes	55 05 21.55N 014 41 22.80E	348	338	LIM FR	

#### 2.2 Instrument approach procedures

As of AIRAC 28 NOV 2024 all existing procedures are renamed with identification Z (except for COPTER ILS or LOC RWY 29 which is not affected by crane operations). In addition to existing instrument approach procedures, temporary procedures with identification Y and X are published, except for the **HPMA TACAN RWY 11** which is not authorised as a Y- and X-procedure.

*continued...*

**Z-PROCEDURES:**

Existing IAC	Renamed/temporary IAC	Operational use
ILS or LOC RWY 11	ILS or LOC Z RWY 11	When cranes up to 348 FT are in operation / Cranes shown on chart
ILS or LOC RWY 29	ILS or LOC Z RWY 29	
COPTER ILS or LOC RWY 11	COPTER ILS or LOC Z RWY 11	
HPMA TACAN RWY 11	HPMA TACAN Z RWY 11	
HPMA TACAN RWY 29	HPMA TACAN Z RWY 29	

**Y-PROCEDURES:**

Existing IAC	Renamed/temporary IAC	Operational use
ILS or LOC RWY 11	ILS or LOC Y RWY 11	When the 525 FT crane is in operation / Crane shown on chart
ILS or LOC RWY 29	ILS or LOC Y RWY 29	
COPTER ILS or LOC RWY 11	COPTER ILS or LOC Y RWY 11	
HPMA TACAN RWY 29	HPMA TACAN Y RWY 29	

HPMA TACAN RWY 11 is not available as a Y-procedure.

**X-PROCEDURES:**

Existing IAC	Renamed/temporary IAC	Operational use
ILS or LOC RWY 11	ILS or LOC X RWY 11	When the 689 FT crane is in operation / Crane shown on chart
ILS or LOC RWY 29	ILS or LOC X RWY 29	
COPTER ILS or LOC RWY 11	COPTER ILS or LOC X RWY 11	
HPMA TACAN RWY 29	HPMA TACAN X RWY 29	

HPMA TACAN RWY 11 is not available as an X-procedure.

ATC WILL NOTIFY ARRIVING AIRCRAFT OF WHICH SET OF PROCEDURE IS IN FORCE.

*continued...*

### 2.3 Departure procedures

Omnidirectional departure:

RWY 11: No changes.

RWY 29: After departure turn left, climb on track 274° to 1000 FT MSL before turn is commenced. Procedure design gradient 5.5% up to 900 FT MSL due to Crane at 689 FT / 2.3 NM NW of THR11.

Remark RWY 29: Can Aircraft not comply contact ATC 24H before ETD for alternative departure. Availability depending on OBST Rønne Havn 1 and 2.

**Alternative Omnidirectional departure RWY 29:** After departure turn left, climb on track 274° to 700 FT MSL before turn is commenced.

### 2.4 Noise Abatement Provisions

RWY 11: No changes.

RWY 29: For IFR departures, disregard the noise abatement procedure described in AIP DENMARK, AD 2 - EKRN - sub-section 21. Noise Abatement Provisions.

### 3 General

Further information will be contained in NOTAM.

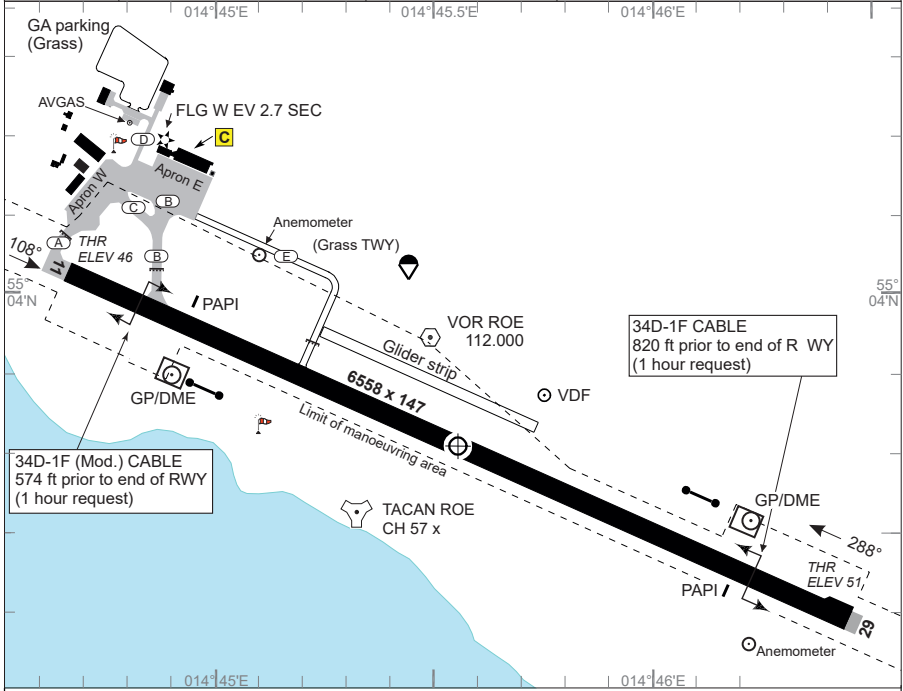
### 4 Completion of works

Completion of works will be published in an AIRAC SUP cancellation, expected at the end of March 2026.

# AERODROME CHART

ROENNE (EKRN)

RØNNE TOWER <b>118.330 (VDF) 257.800</b>		BORNHOLM HANDLING <b>131.550</b>		REMARK: Airport phone: +45 56 95 26 26
AD Elev <b>52</b>	ARP 55°03.80'N 014°45.58'E	VAR 5.5°E (JAN 2023)		



RWY	PCN	DECLARED DISTANCES					THR ELEV	RWY LIGHTING					THR PSN		
		PSN	TORA	TODA	ASDA	LDA		THR	PAPI	TDZ	CL	EDGE			END
11	38 F/B/X/T	THR				6568	46	LIH	3.00°				LIH	LIH	55°04.01'N 014°44.71'E
		A	6568	6568	6568										
		B	5928	5928	5928										
29		THR	6568	6568	6568	6568	51	LIH	3.00°				LIH	LIH	55°03.58'N 014°46.43'E

**Flight Procedures**  
 1. IFR Arrival  
 1.1 Aircraft will normally be cleared by SWEDEN CONTROL to ROE VOR.  
 1.2 Navigation aid designated for radio communication failure during IMC for arriving aircraft is NDB FAU.  
 2. IFR Departure  
 2.1 Standard Instrument Departures (SID) have not been established.  
 2.2 Omnidirectional departures  
**RWY 11:** Climb straight ahead to at least 700 FT MSL before turn is commenced.  
**RWY 29:** After departure turn left, climb on track 274° to 1000 FT MSL before turn is commenced. Procedure design gradient 5.5% up to 900 FT MSL due to Crane at 689 FT / 2.3 NM NW of THR11.  
 Remark RWY 29: Can Aircraft not comply, contact ATC 24H before EDT for alternative departure. Availability depending on OBST Rønne Havn 1 and 2.  
**Alternative Omnidirectional departure RWY 29:**  
 After departure turn left, climb on track 274° to 700 FT MSL before turn is commenced.

CHANGES: OMNI DEP RWY 29

AIR COMMAND DENMARK - MIL AIM 28 NOV 2024 - RDAF FLIP SUP.

# AERODROME CHART

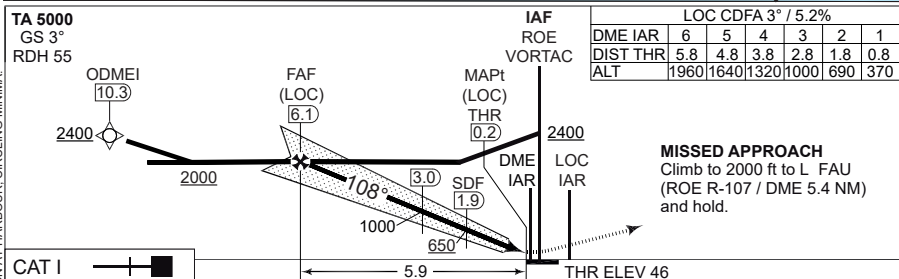
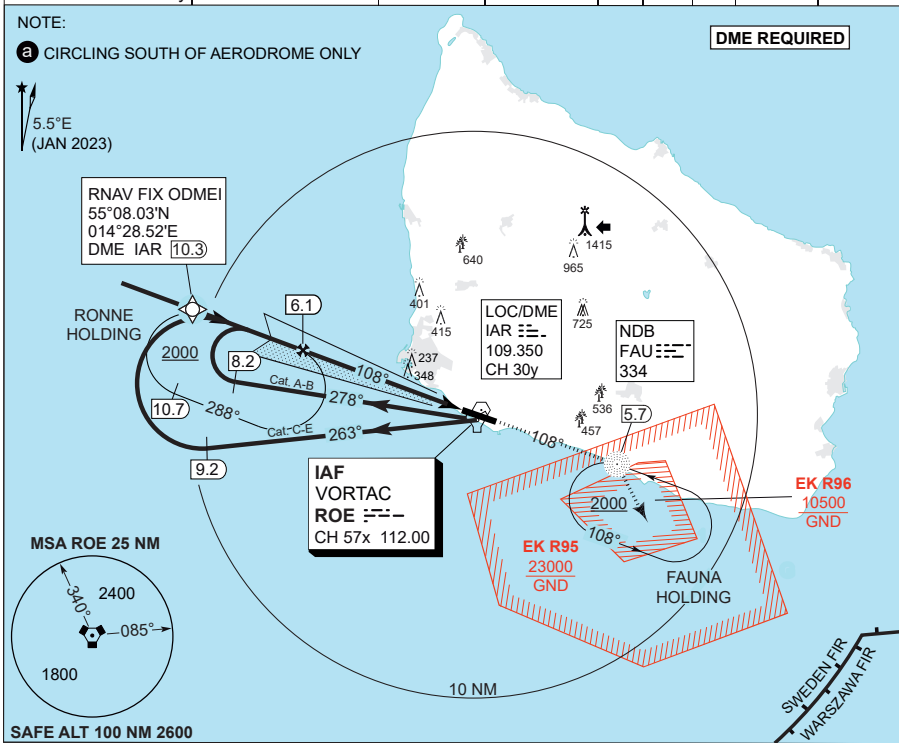
ROENNE (EKRN)

**MIPS**  
**INSTRUMENT APPROACH CHART**

**ILS or LOC Z RWY 11**  
**ROENNE (EKRN)**

AD ELEV 52

SWEDEN CONTROL 134.980 128.180		ROENNE TOWER 257.800 118.330						
LOC/DME IAR 109.350/CH 30y	VORTAC ROE 112.00/CH 57x	APP COURSE 108°	GS INTCP ALT 2000 FT	GS 3.0°	DA 246	THR 46	ALS length 600 M	LDA 6568 FT



CATEGORY	A	B	C	D	E	
S-ILS 11		246 - 750 200 (200-0.8/1.2)			255 - 750 209 (300-0.8/1.2)	
S-LOC 11		350 - 1000 304 (400-1.0/1.4)				
CIRCLING a	470 - 1.5 418 (500-1.5)	700 - 1.6 648 (700-1.6)	800 - 2.4 748 (800-2.4)	800 - 3.6 748 (800-3.6)	900 - 3.6 848 (900-3.6)	

**ILS or LOC Z RWY 11**

55°03.80'N  
014°45.58'E  
10-2

**ROENNE (EKRN)**

CHANGES: OBST. ELEVATION AT HARBOUR, CIRCLING MINIMA.

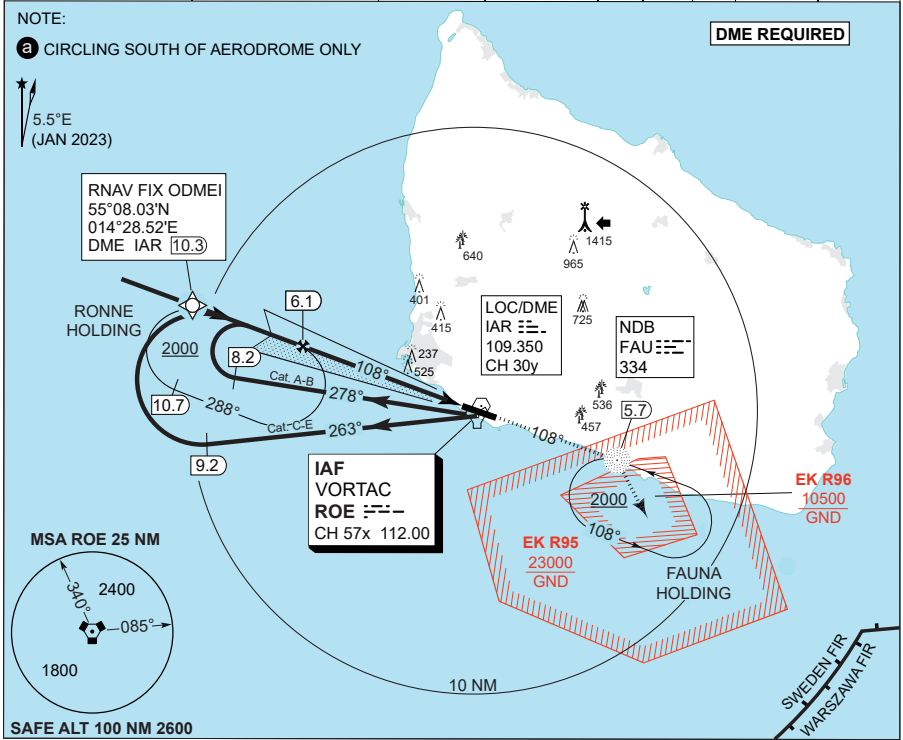
AIR COMMAND DENMARK - MIL AIM 28 NOV 2024 - RDAF FLIP SUP

**MIPS**  
**INSTRUMENT APPROACH CHART**

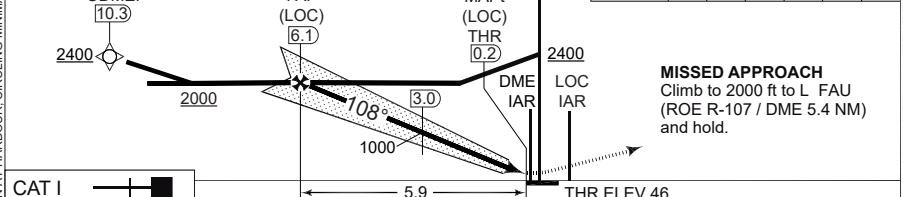
**ILS or LOC Y RWY 11**  
**ROENNE (EKRN)**

AD ELEV 52

SWEDEN CONTROL 134.980 128.180		ROENNE TOWER 257.800 118.330						
LOC/DME IAR 109.350/CH 30y	VORTAC ROE 112.00/CH 57x	APP COURSE 108°	GS INTCP ALT 2000 FT	GS 3.0°	DA 246	THR 46	ALS length 600 M	LDA 6568 FT



TA 5000 GS 3° RDH 55	LOC CDFa 3° / 5.2%						
	DME IAR	6	5	4	3	2	1
	DIST THR	5.8	4.8	3.8	2.8	1.8	0.8
ALT	1960	1640	1320	1000	690	370	



CATEGORY	A	B	C	D	E	
S-ILS 11		246 - 750 200 (200-0.8/1.2)				255 - 750 209 (300-0.8/1.2)
S-LOC 11	NOT AUTHORISED.					
CIRCLING <b>a</b>	470 - 1.5 418 (500-1.5)	820 - 1.6 768 (800-1.6)	920 - 2.4 868 (900-2.4)	920 - 3.6 868 (900-3.6)	1020 - 3.6 968 (1000-3.6)	

**ILS or LOC Y RWY 11**

55°03.80'N  
014°45.58'E  
10-2

**ROENNE (EKRN)**

CHANGES: OBST. ELEVATION AT HARBOUR, CIRCLING MINIMA, S-LOC N/A

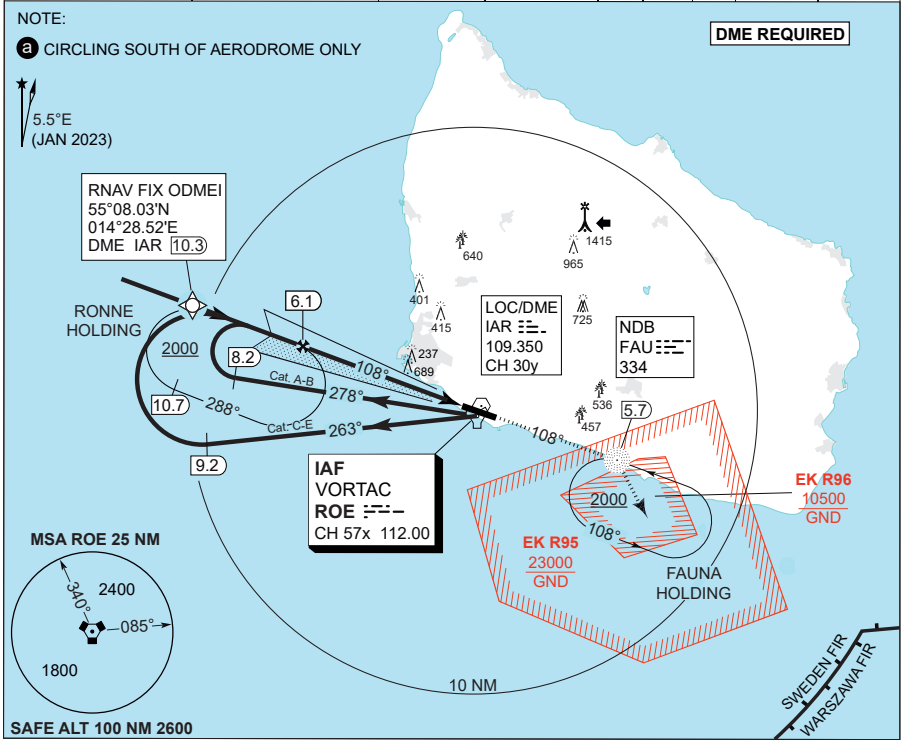
AIR COMMAND DENMARK - MIL AIM 28 NOV 2024 - RDAF FLIP SUP

**MIPS**  
**INSTRUMENT APPROACH CHART**

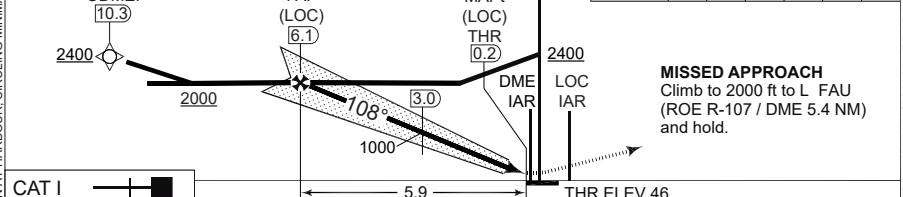
**ILS or LOC X RWY 11**  
**ROENNE (EKRN)**

AD ELEV 52

SWEDEN CONTROL 134.980 128.180			ROENNE TOWER 257.800 118.330					
LOC/DME IAR 109.350/CH 30y	VORTAC ROE 112.00/CH 57x	APP COURSE 108°	GS INTCP ALT 2000 FT	GS 3.0°	DA <b>246</b>	THR 46	ALS length 600 M	LDA 6568 FT



TA 5000 GS 3° RDH 55	LOC CDF A 3° / 5.2%						
	DME IAR	6	5	4	3	2	1
	DIST THR	5.8	4.8	3.8	2.8	1.8	0.8
ALT	1960	1640	1320	1000	690	370	



CATEGORY	A	B	C	D	E
S-ILS 11	246 - 750 200 (200-0.8/1.2)				255 - 750 209 (300-0.8/1.2)
S-LOC 11	NOT AUTHORISED.				
CIRCLING <b>a</b>	470 - 1.5 418 (500-1.5)	820 - 1.6 768 (800-1.6)	920 - 2.4 868 (900-2.4)	920 - 3.6 868 (900-3.6)	1020 - 3.6 968 (1000-3.6)

**ILS or LOC X RWY 11**

55°03.80'N  
014°45.58'E  
10-2

**ROENNE (EKRN)**

CHANGES: OBST. ELEVATION AT HARBOUR, CIRCLING MINIMA.

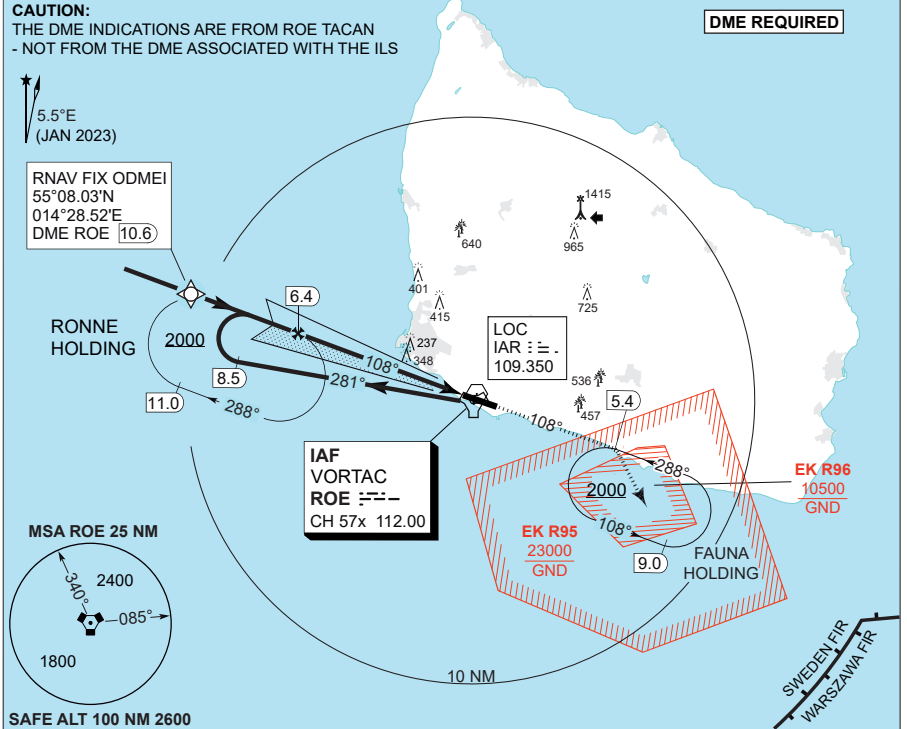
AIR COMMAND DENMARK - MIL AIM 28 NOV 2024 - RDAF FLIP SUP

**MIPS**  
**INSTRUMENT APPROACH CHART**

AD ELEV 52

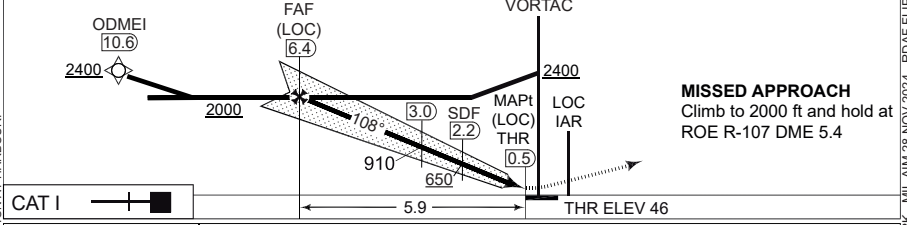
**COPTER ILS or LOC Z RWY 11**  
**ROENNE (EKRN)**

SWEDEN CONTROL 134.980 128.180				ROENNE TOWER 257.800 118.330				
LOC IAR 109.350	VORTAC ROE 112.00/CH 57x	APP COURSE 108°	GS INTCP ALT 2000 FT	GS 3.0°	DA <b>246</b>	THR 46	ALS length 600 M	LDA 6568 FT



DME ROE	6	5	4	3	2
DIST THR	5.6	4.6	3.6	2.6	1.6
ALT	1870	1550	1230	910	600

**TA 5000**  
GS 3°  
RDH 55



CATEGORY	H
H-ILS 11	<b>246</b> - 400 200 (200-0.4/0.8)
H-LOC 11	<b>330</b> - 400 284 (300-0.4/0.8)

**COPTER ILS or LOC Z RWY 11**

**ROENNE (EKRN)**

55°03.80'N  
014°45.58'E  
10-3

CHANGES: OBST. ELEVATION AT HARBOUR.

AIR COMMAND DENMARK - MIL AIM 28 NOV 2024 - RDAF FLIP SUP

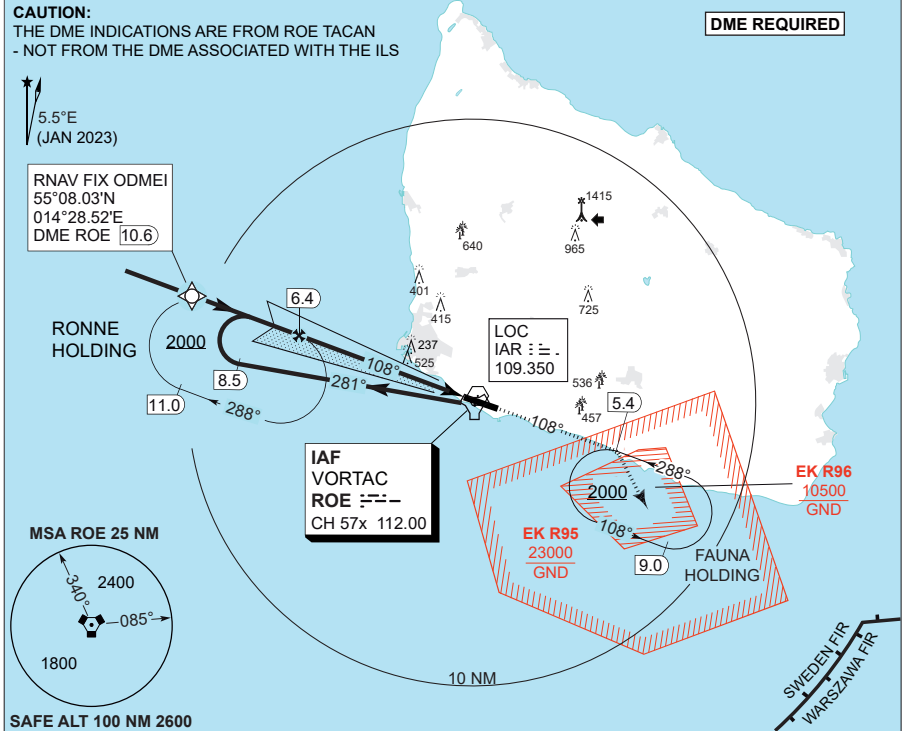


**MIPS**  
**INSTRUMENT APPROACH CHART**

AD ELEV 52

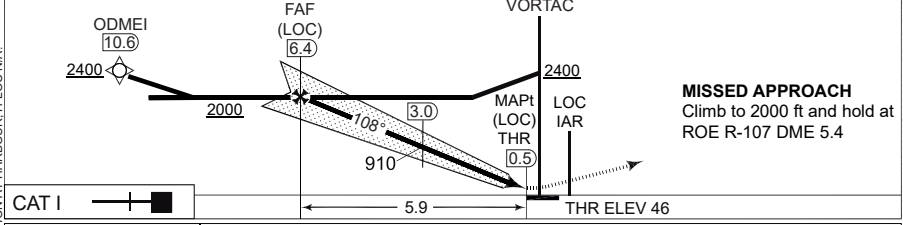
**COPTER ILS or LOC Y RWY 11**  
**ROENNE (EKRN)**

SWEDEN CONTROL 134.980 128.180			ROENNE TOWER 257.800 118.330					
LOC IAR 109.350	VORTAC ROE 112.00/CH 57x	APP COURSE 108°	GS INTCP ALT 2000 FT	GS 3.0°	DA <b>246</b>	THR 46	ALS length 600 M	LDA 6568 FT



DME ROE	6	5	4	3	2
DIST THR	5.6	4.6	3.6	2.6	1.6
ALT	1870	1550	1230	910	600

**TA 5000**  
GS 3°  
RDH 55



CATEGORY	H
H-ILS 11	<b>246</b> - 400 200 (200-0.4/0.8)
H-LOC 11	NOT AUTHORISED.

**COPTER ILS or LOC Y RWY 11**

**ROENNE (EKRN)**

55°03.80'N  
014°45.58'E  
10-3

CHANGES: OBST. ELEVATION AT HARBOUR, H-LOC N/A.

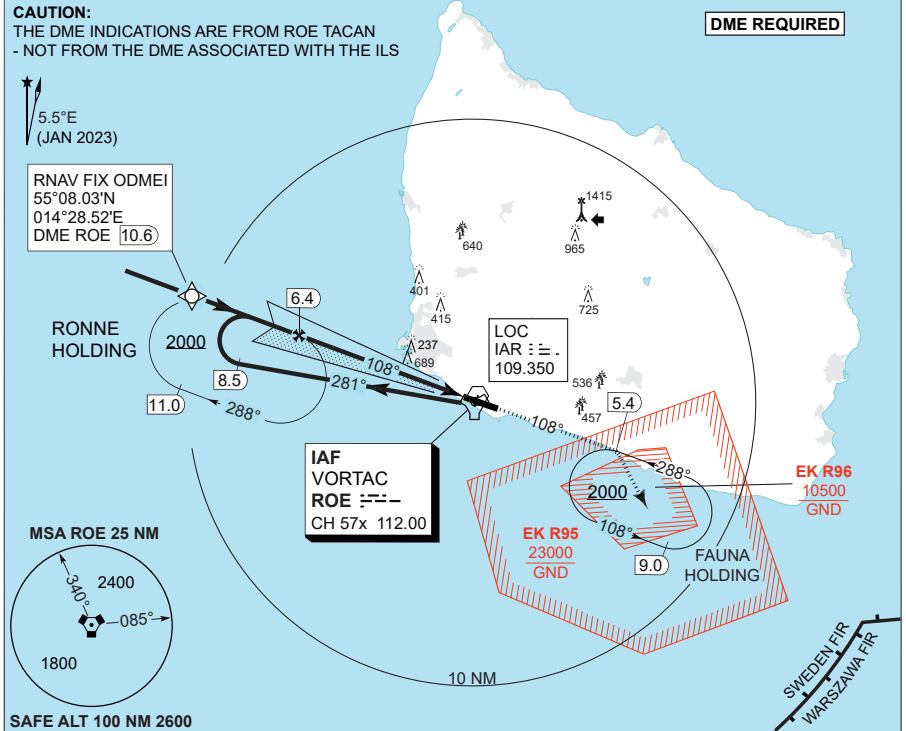
AIR COMMAND DENMARK - MIL AIM 28 NOV 2024 - RDAF FLIP SUP

**MIPS**  
**INSTRUMENT APPROACH CHART**

AD ELEV 52

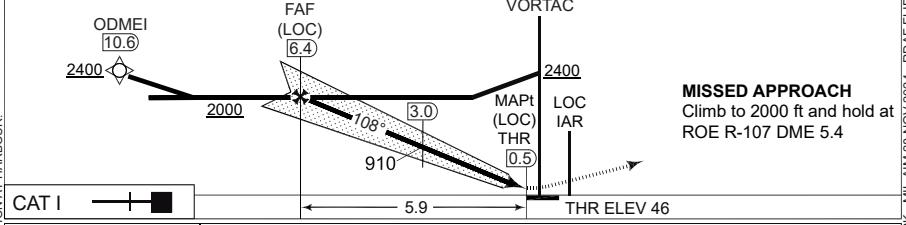
**COPTER ILS or LOC X RWY 11**  
**ROENNE (EKRN)**

SWEDEN CONTROL 134.980 128.180				ROENNE TOWER 257.800 118.330				
LOC IAR 109.350	VORTAC ROE 112.00/CH 57x	APP COURSE 108°	GS INTCP ALT 2000 FT	GS 3.0°	DA <b>246</b>	THR 46	ALS length 600 M	LDA 6568 FT



DME ROE	6	5	4	3	2
DIST THR	5.6	4.6	3.6	2.6	1.6
ALT	1870	1550	1230	910	600

**TA 5000**  
GS 3°  
RDH 55



CATEGORY	H
H-ILS 11	<b>246</b> - 400 200 (200-0.4/0.8)
H-LOC 11	NOT AUTHORISED.

**COPTER ILS or LOC X RWY 11**

**ROENNE (EKRN)**

55°03.80'N  
014°45.58'E  
10-3

CHANGES: OBST. ELEVATION AT HARBOUR.

AIR COMMAND DENMARK - MIL AIM 28 NOV 2024 - RDAF FLIP SUP

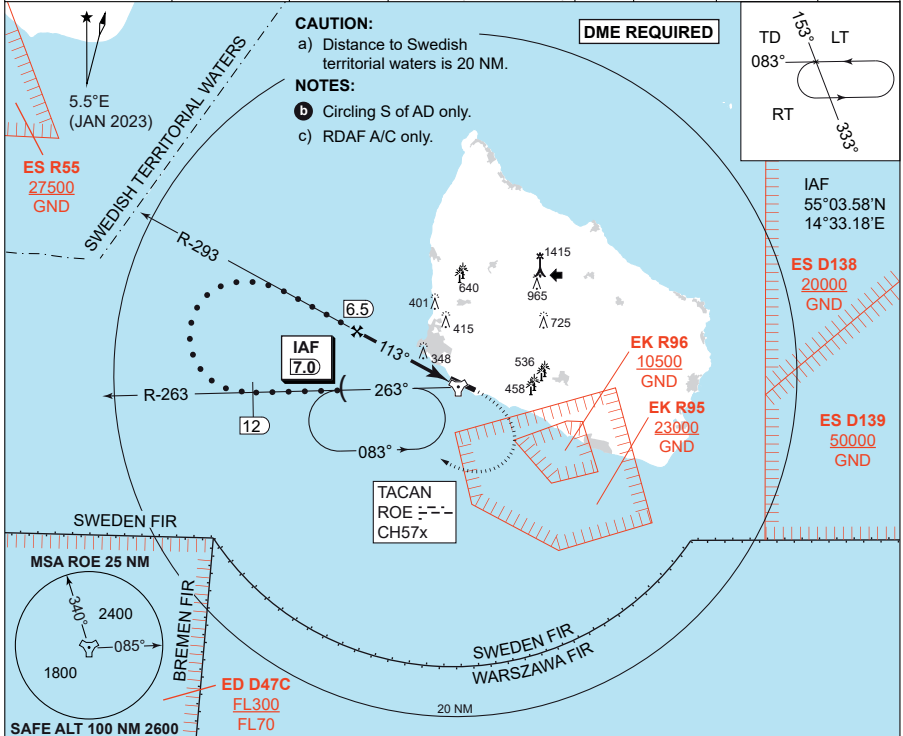
**MIPS**  
**INSTRUMENT APPROACH CHART**

**HPMA TACAN Z RWY 11**  
**ROENNE (EKRN)**

AD ELEV 52

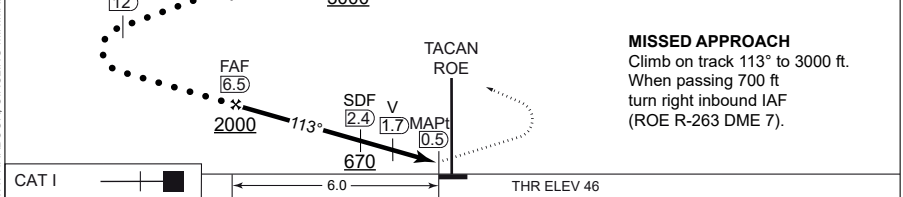
SWEDEN CONTROL 134.980 128.180				ROENNE TOWER 257.800 118.330			
-----------------------------------	--	--	--	---------------------------------	--	--	--

TACAN ROE CH 57x	APP COURSE 113°	FAF ALT 2000 FT	DESCENT GR. 5.24% (318 FT/NM)	MDA <b>440</b>	THR ELEV 46	ALS LENGTH 600 M	LDA 6568 FT
---------------------	--------------------	--------------------	----------------------------------	-------------------	----------------	---------------------	----------------



SAFE ALT 100 NM 2600

TA 5000	IAF 7.0	FL 90	CDFA 3.00° / 5.24%					
	263°	3000	DME ROE	6	5	4	3	2
	FAF 6.5	2000	DIST THR	5.5	4.5	3.5	2.5	1.5
			ALT	1870	1550	1230	910	600



HPMA	HPMA
S-TACAN 11	<b>440</b> - 1400 388 (400-1.4/1.8)
CIRCLING	<b>650</b> - 3.2 598 (600-3.2)

**HPMA TACAN Z RWY 11**      55°03.80'N  
014°45.58'E  
10-4

**ROENNE (EKRN)**

CHANGES: OBST. ELEVATION AT HARBOUR, CIRCLING MINIMA.

AIR COMMAND DENMARK - MIL AIM 28 NOV 2024 - RDAF FLIP SUP.

MIPS

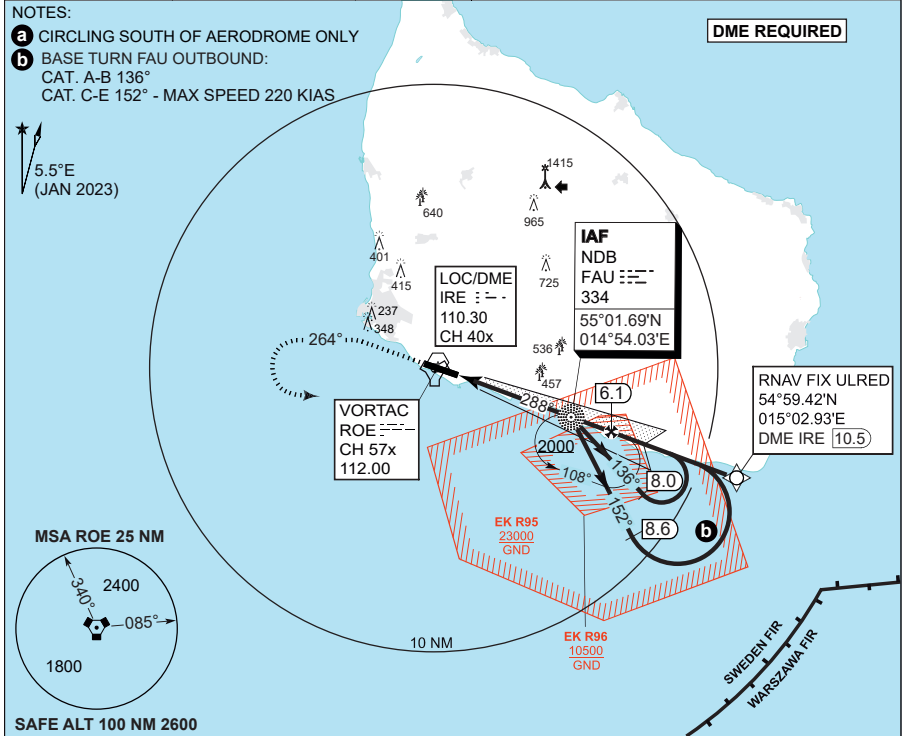
**INSTRUMENT APPROACH CHART**

AD ELEV 52

ILS or LOC Z RWY 29

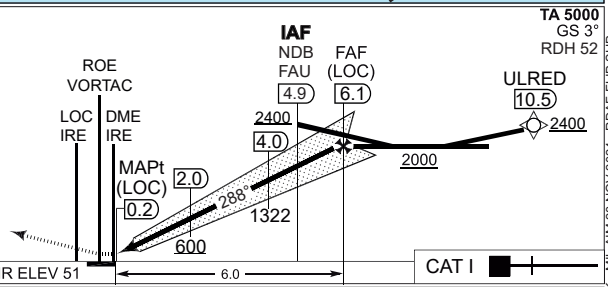
**ROENNE (EKRN)**

SWEDEN CONTROL 134.980 128.180				ROENNE TOWER 257.800 118.330				
LOC/DME IRE 110.30/CH40x	VORTAC ROE 112.00/CH 57x	APP COURSE 288°	GS INTCP ALT 2000 FT	GS 3.0°	DA <b>251</b>	THR 51	ALS length 900 M	LDA 6568 FT



LOC CDFA 3.00° / 5.2%					
DME IRE	2	3	4	5	6
DIST THR	1.8	2.8	3.8	4.8	5.8
ALT	690	1010	1330	1640	1960

**MISSED APPROACH**  
 Climb to minimum 700 ft, turn left and climb on track 264° to 2000 ft. Turn left to FAU NDB (ROE R-107, IRE DME 4.9) and hold.



CATEGORY	A	B	C	D	E
S-ILS 29			<b>251</b> - 550 200 (200-0.8/1.2)		
S-LOC 29			<b>400</b> - 900 348 (400-0.9/1.6)		
CIRCLING <b>a</b>	<b>470</b> - 1.5 418 (500-1.5)	<b>700</b> - 1.6 648 (700-1.6)	<b>800</b> - 2.4 748 (800-2.4)	<b>800</b> - 3.6 748 (800-3.6)	<b>900</b> - 3.6 848 (900-3.6)

ILS or LOC Z RWY 29

55 03.80'N  
 014 45.58'E  
 10-5

**ROENNE (EKRN)**

CHANGES: OBST. ELEVATION AT HARBOUR. CIRCLING MINIMA.

AIR COMMAND DENMARK - MIL AIM 28 NOV 2024 - RDAF FLIP SUP.

MIPS

**INSTRUMENT APPROACH CHART**

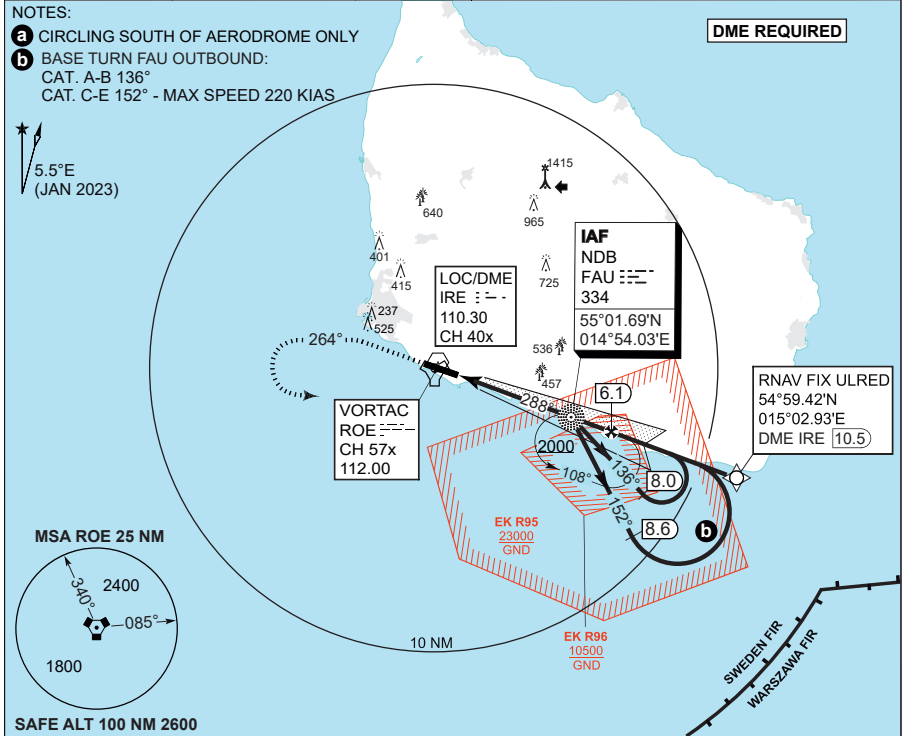
AD ELEV 52

ILS or LOC Y RWY 29

**ROENNE (EKRN)**

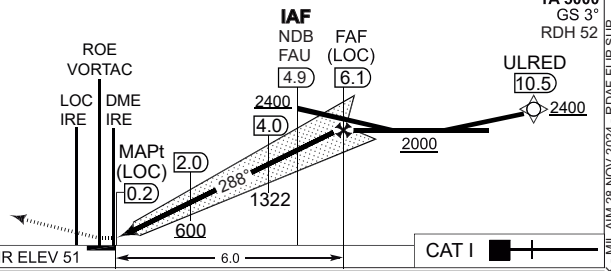
SWEDEN CONTROL 134.980 128.180				ROENNE TOWER 257.800 118.330			
-----------------------------------	--	--	--	---------------------------------	--	--	--

LOC/DME IRE 110.30/CH40x	VORTAC ROE 112.00/CH 57x	APP COURSE 288°	GS INTCP ALT 2000 FT	GS 3.0°	DA 251	THR 51	ALS length 900 M	LDA 6568 FT
-----------------------------	-----------------------------	--------------------	-------------------------	------------	-----------	-----------	---------------------	----------------



LOC CDFA 3.00° / 5.2%	2	3	4	5	6
DME IRE	1.8	2.8	3.8	4.8	5.8
DIST THR	690	1010	1330	1640	1960
ALT					

**MISSED APPROACH**  
Climb to minimum 700 ft, turn left and climb on track 264° to 2000 ft. Turn left to FAU NDB (ROE R-107, IRE DME 4.9) and hold.



MIPS	CATEGORY	A	B	C	D	E
	S-ILS 29	251 - 550 200 (200-0.8/1.2)			255 - 550 204 (300-0.8/1.2)	265 - 550 214 (300-0.8/1.2)
	S-LOC 29	400 - 900 348 (400-0.9/1.6)				
CIRCLING (a)	470 - 1.5 418 (500-1.5)	820 - 1.6 768 (800-1.6)	920 - 2.4 868 (900-2.4)	920 - 3.6 868 (900-3.6)	1020 - 3.6 968 (1000-3.6)	

ILS or LOC Y RWY 29

55 03.80°N  
014 45.58°E  
10-5

**ROENNE (EKRN)**

CHANGES: OBST. ELEVATION AT HARBOUR, MINIMA.

AIR COMMAND DENMARK - MIL AIM 28 NOV 2024 - RDAF FLIP SUP.

MIPS

**INSTRUMENT APPROACH CHART**

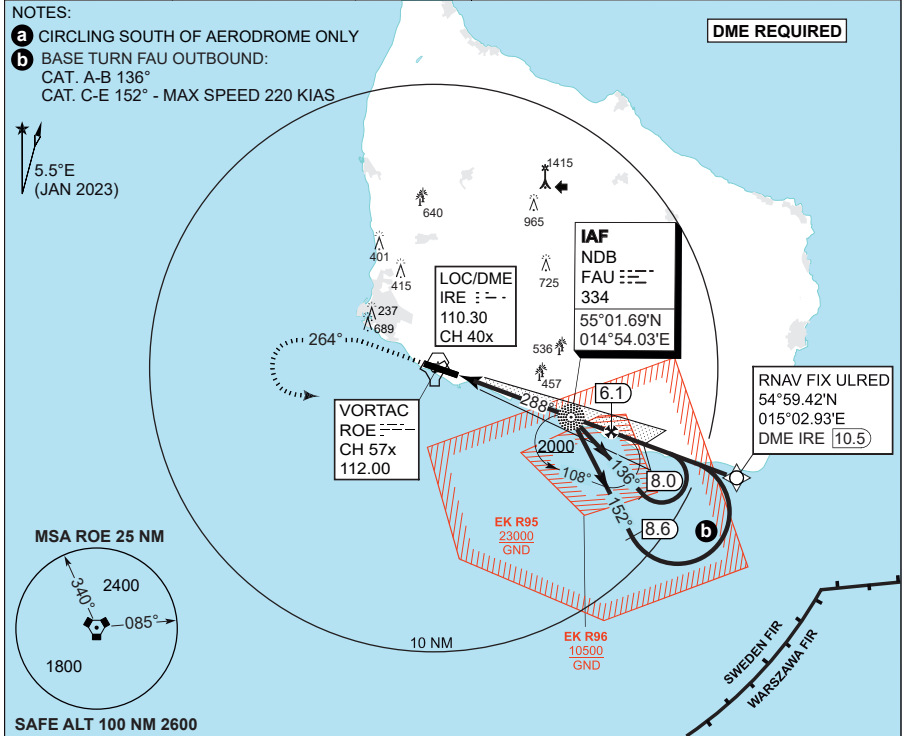
AD ELEV 52

ILS or LOC X RWY 29

**ROENNE (EKRN)**

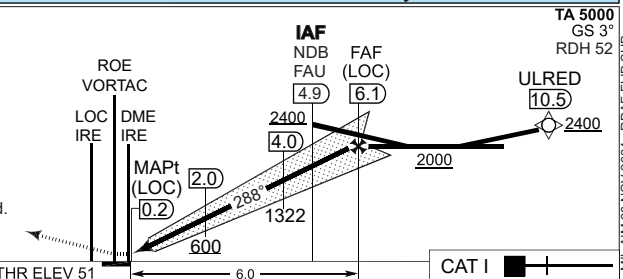
SWEDEN CONTROL 134.980 128.180				ROENNE TOWER 257.800 118.330			
-----------------------------------	--	--	--	---------------------------------	--	--	--

LOC/DME IRE 110.30/CH40x	VORTAC ROE 112.00/CH 57x	APP COURSE 288°	GS INTCP ALT 2000 FT	GS 3.0°	DA 251	THR 51	ALS length 900 M	LDA 6568 FT
-----------------------------	-----------------------------	--------------------	-------------------------	------------	-----------	-----------	---------------------	----------------



LOC CDFA 3.00° / 5.2%					
DME IRE	2	3	4	5	6
DIST THR	1.8	2.8	3.8	4.8	5.8
ALT	690	1010	1330	1640	1960

**MISSED APPROACH**  
 Climb to minimum 700 ft, turn left and climb on track 264° to 2000 ft. Turn left to FAU NDB (ROE R-107, IRE DME 4.9) and hold.



CATEGORY	A	B	C	D	E
S-ILS 29	251 - 550 200 (200-0.8/1.2)			255 - 550 204 (300-0.8/1.2)	265 - 550 214 (300-0.8/1.2)
S-LOC 29	400 - 900 348 (400-0.9/1.6)				
CIRCLING <b>a</b>	470 - 1.5 418 (500-1.5)	820 - 1.6 768 (800-1.6)	920 - 2.4 868 (900-2.4)	920 - 3.6 868 (900-3.6)	1020 - 3.6 968 (1000-3.6)

ILS or LOC X RWY 29

55 03.80'N  
 014 45.58'E  
 10-5

**ROENNE (EKRN)**

CHANGES: OBST. ELEVATION AT HARBOUR. CIRCLING MINIMA.

AIR COMMAND DENMARK - MIL AIM 28 NOV 2024 - RDAF FLIP SUP.

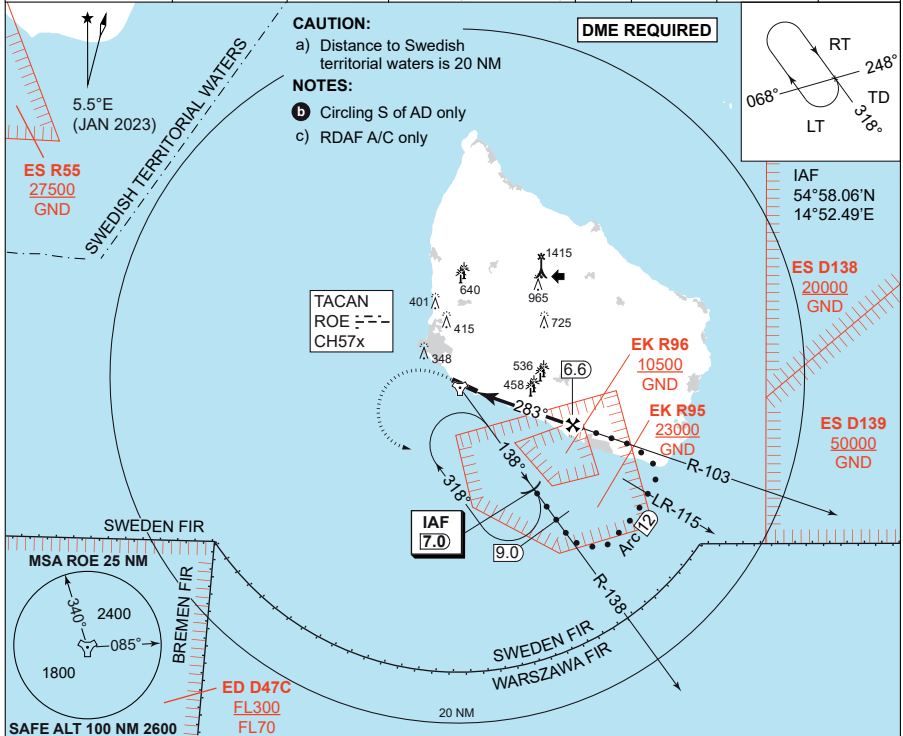
**MIPS**  
**INSTRUMENT APPROACH CHART**

**HPMA TACAN Z RWY 29**  
**ROENNE (EKRN)**

AD ELEV 52

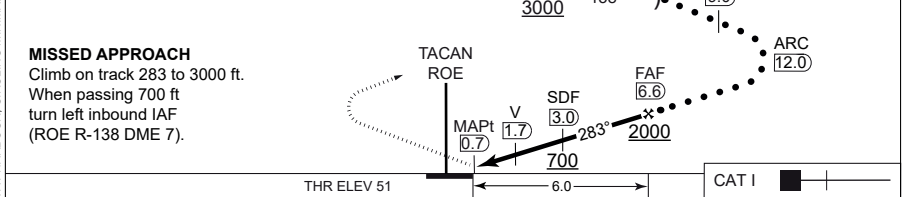
SWEDEN CONTROL 134.980 128.180		ROENNE TOWER 257.800 118.330				
-----------------------------------	--	---------------------------------	--	--	--	--

TACAN ROE CH 57x	APP COURSE 283°	FAF ALT 2000 FT	DESCENT GR. 5.24% (318 FT/NM)	MDA 460	THR ELEV 51	ALS LENGTH 900 M	LDA 6568 FT
---------------------	--------------------	--------------------	----------------------------------	------------	----------------	---------------------	----------------



CDFA 3.00' / 5.24%						
DME ROE	2	3	4	5	6	
DIST THR	1.4	2.4	3.4	4.4	5.4	
ALT	540	860	1180	1500	1820	

TA 5000



CATEGORY	HPMA
S-TACAN 29	460 - 1200 408 (500-1.2/1.9)
CIRCLING	650 - 3.2 598 (600-3.2)

**HPMA TACAN Z RWY 29**

**ROENNE (EKRN)**

55°03.80'N  
014°45.58'E  
10-7

CHANGES: OBST. ELEVATION AT HARBOUR, CIRCLING MINIMA.

AIR COMMAND DENMARK - MIL AIN 28 NOV 2024 - RDAF FLIP SUP.

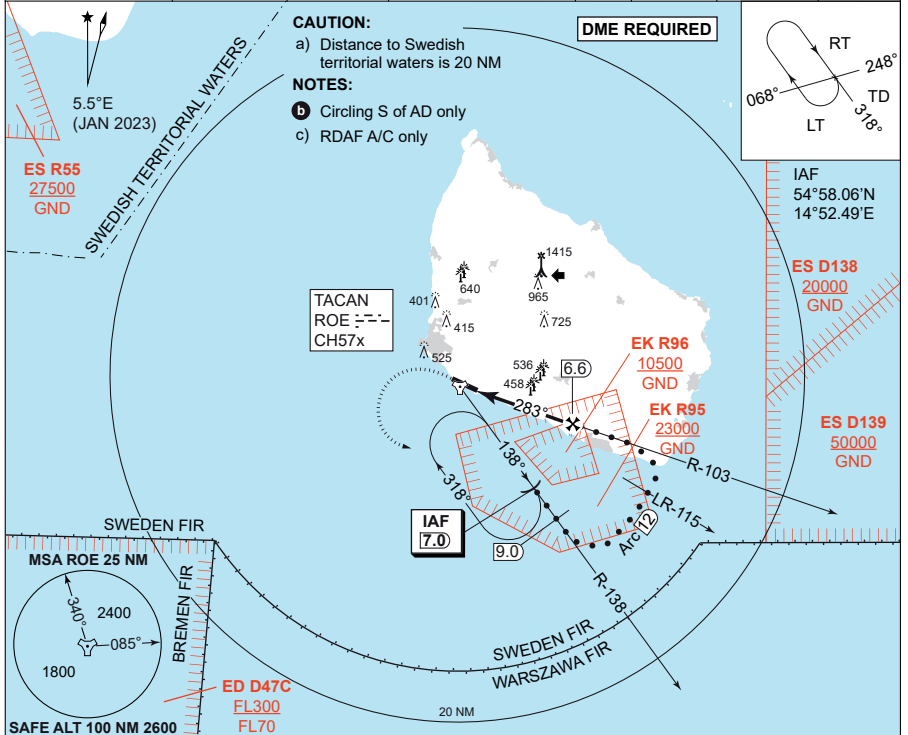
**MIPS**  
**INSTRUMENT APPROACH CHART**

**HPMA TACAN Y RWY 29**  
**ROENNE (EKRN)**

AD ELEV 52

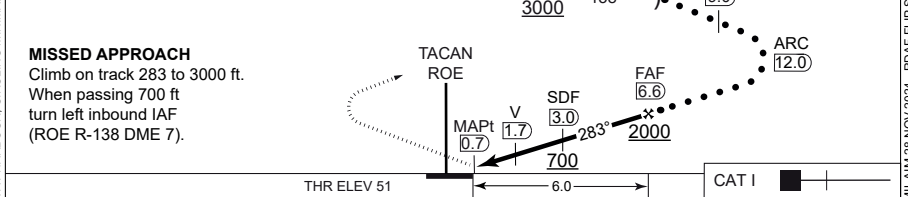
SWEDEN CONTROL 134.980 128.180		ROENNE TOWER 257.800 118.330				
-----------------------------------	--	---------------------------------	--	--	--	--

TACAN ROE CH 57x	APP COURSE 283°	FAF ALT 2000 FT	DESCENT GR. 5.24% (318 FT/NM)	MDA 460	THR ELEV 51	ALS LENGTH 900 M	LDA 6568 FT
---------------------	--------------------	--------------------	----------------------------------	------------	----------------	---------------------	----------------



CDFA 3.00' / 5.24%						
DME ROE	2	3	4	5	6	
DIST THR	1.4	2.4	3.4	4.4	5.4	
ALT	540	860	1180	1500	1820	

TA 5000



CATEGORY	HPMA
S-TACAN 29	460 - 1200 408 (500-1.2/1.9)
CIRCLING	830 - 3.2 778 (800-3.2)

**HPMA TACAN Y RWY 29**

**ROENNE (EKRN)**

55°03.80'N  
014°45.58'E  
10-7

CHANGES: OBST. ELEVATION AT HARBOUR, CIRCLING MINIMA.

AIR COMMAND DENMARK - MIL AIN 28 NOV 2024 - RDAF FLIP SUP.



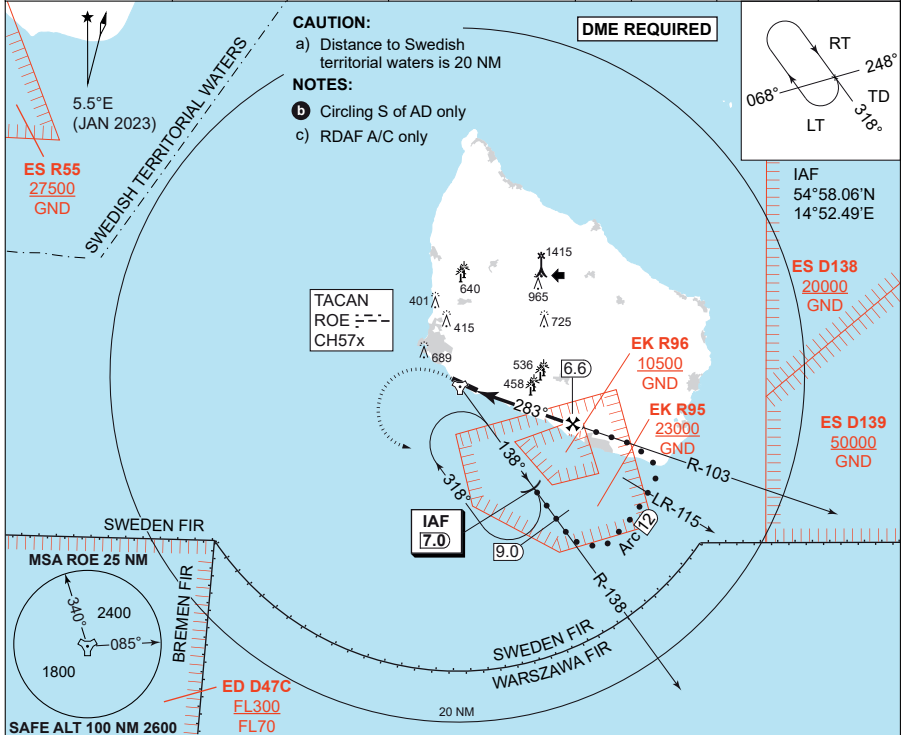
**MIPS**  
**INSTRUMENT APPROACH CHART**

**HPMA TACAN X RWY 29**  
**ROENNE (EKRN)**

AD ELEV 52

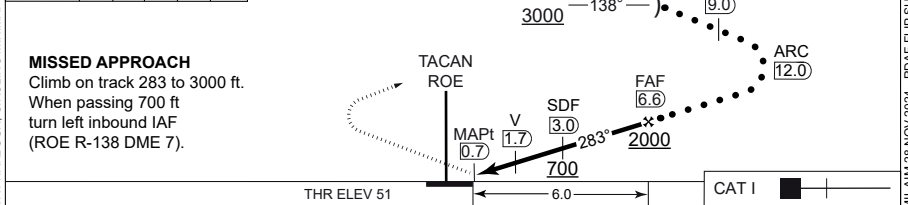
SWEDEN CONTROL 134.980 128.180				ROENNE TOWER 257.800 118.330			
-----------------------------------	--	--	--	---------------------------------	--	--	--

TACAN ROE CH 57x	APP COURSE 283°	FAF ALT 2000 FT	DESCENT GR. 5.24% (318 FT/NM)	MDA 460	THR ELEV 51	ALS LENGTH 900 M	LDA 6568 FT
---------------------	--------------------	--------------------	----------------------------------	------------	----------------	---------------------	----------------



CDFA 3.00' / 5.24%						
DME ROE	2	3	4	5	6	
DIST THR	1.4	2.4	3.4	4.4	5.4	
ALT	540	860	1180	1500	1820	

TA 5000



CATEGORY	HPMA
S-TACAN 29	460 - 1200 408 (500-1.2/1.9)
CIRCLING	1000 - 3.2 948 (1000-3.2)

**HPMA TACAN X RWY 29**

**ROENNE (EKRN)**

55°03.80'N  
014°45.58'E  
10-7

CHANGES: OBST. ELEVATION AT HARBOUR, CIRCLING MINIMA.

AIR COMMAND DENMARK - MIL AIN 28 NOV 2024 - RDAF FLIP SUP.